

Christchurch Road, Brixton, SW2

2 bedroom flat - purpose built for sale

£390,000

Share of Freehold

Property Details

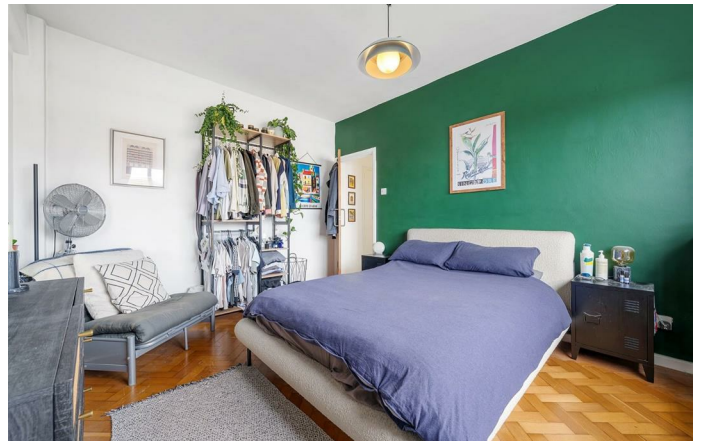
A beautifully presented two double bedroom apartment, set atop an elegant Art Deco gated mansion block with lift access, boasting panoramic views of the London skyline and striking sunset vistas. Located on the top floor, this exquisite home enjoys abundant natural light, exceptional privacy, and a stylish interior. The generously sized reception room is a true focal point, featuring characterful parquet flooring, statement blue walls, and large windows, with a patio door leading to a private terrace. Ideal for relaxing or dining al-fresco, the terrace enjoys sweeping city views, perfect for soaking in sunset scenes. The separate kitchen balances function and style, with rich wooden cabinetry, sleek worktops, and integrated appliances. Both double bedrooms are spacious and serene, continuing the parquet theme, with ample space for furnishings. The bathroom is chic and modern, finished with soft blue tiles and matte black fittings. Residents benefit from well-kept communal grounds, a bike shed, caretaker service, and optional secure off-street parking (subject to availability upon application), all within this timeless Art Deco setting.

Council tax band B

EPC rating D (56)

Features

- Two double bedrooms
- Private terrace with sunset views
- Top floor apartment with stunning views of the London skyline
- Secure gated Art Deco building
- Over 625 square feet
- Well-maintained communal grounds, lift and bike storage
- Streatham High Street a six-minute stroll away
- Ten-minute walk to the station
- Brixton, Clapham, Balham and Tulse Hill all within walking distance
- Share of freehold

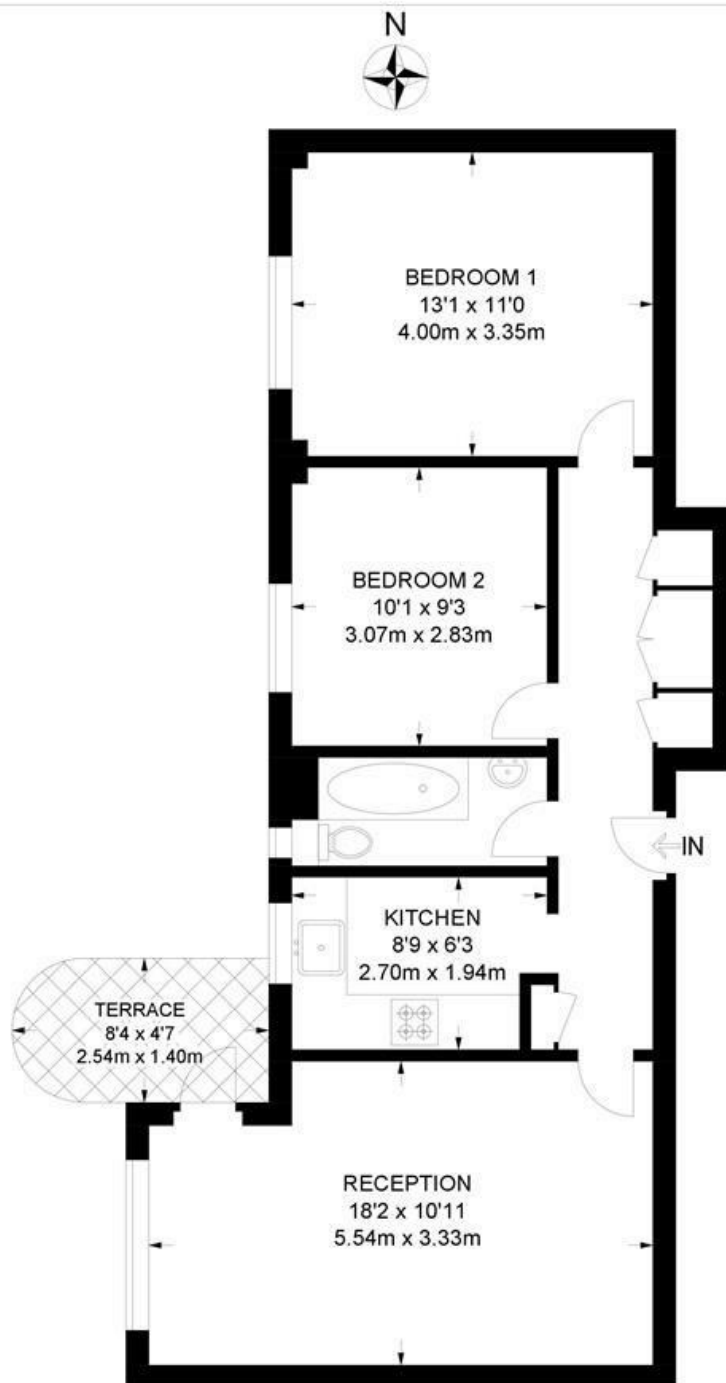




Christchurch Road, Brixton, SW2

Christchurch Road, SW2
2 Bedroom Flat

APPROXIMATE GROSS INTERNAL AREA: **626 SQ FT / 58 SQ M**



FIFTH FLOOR



While we try our very best, floor plans are produced as a guide only and we take no responsibility for the precise accuracy with which any property is represented.

Christchurch Road, Brixton, SW2

